

We've Taken Custom Tailoring To An Entirely New Level



ETC 3006



Our most popular range of fabrics, ideal for travel. Wrinkle Resistant Linen/Rayon Blazers, Suits & Slacks

Our clients place orders from sample garments, swatch sheets, photos, website and e-mail

It has never been easier to order perfect fitting clothing; custom made from your individual pattern...Tuxedos, Suits, Jackets, Slacks, Shirts, Casual Wear, Leather & Suede for Men & Women

- Visit our showroom in Beverly Hills, at least once a year, if possible, to see our new sample collection.
- Call to discuss ideas for clothing and we will forward photo swatch sheets by e-mail or regular mail.
- Email greg@gregchapman.com with your ideas for new clothing. Or, send us a magazine photo. We'll mail or email a selection of swatches and photos, like those shown above, to address your needs.
- View our collection and get more details by visiting our website at www.gregchapman.com
- Invite us to your home or office for a private presentation.
- Invite us to make a "Dress for Success" group presentation at your company or conference, or attend one of our 1 hour "Wardrobe Plan" presentations.



ETC 3001



Pin Cord Jacket Fabrics by Holland and Sherry of London



ETC 40 AAH



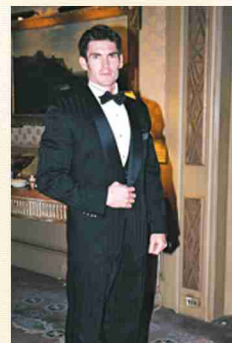
Suits in Self-Design Stripes



L 301



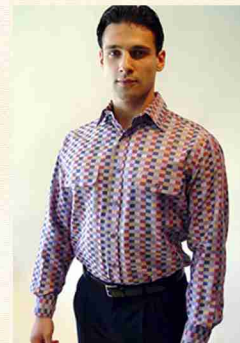
Women's Tweed Jacketings or Suits



ETC 3019



Black or Navy Tuxedos in Solid or Self-Design Tone on Tone



HT 8289



Dozens of Mix and Match Shirt/Slack Combinations



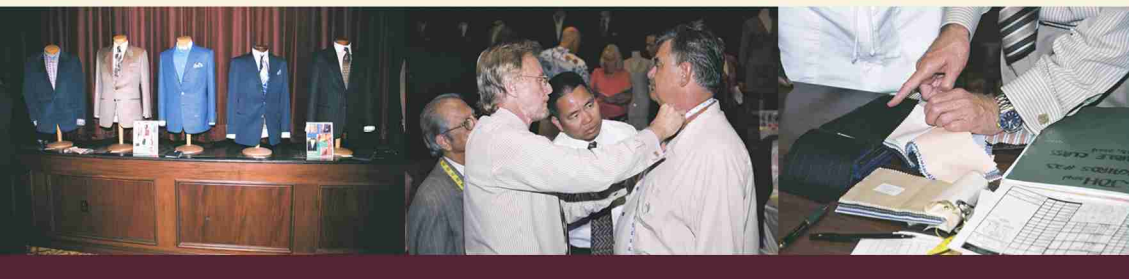
ETC 3018



Herringbone Cotton Cord Jacketings



Harrah's, the World's Largest Gaming Company, Treats 200 VIP High Rollers to Complimentary Greg Chapman Clothing



Greg Chapman was invited to give Harrah's most valued players the "special treatment" at a planned event featuring his talents. Attendees were by "invitation only" for the elegant festivities. It all began with a gala dinner and a presentation of some of Greg's collection. Then, each guest was given a private custom fitting appointment during the weekend. Men and women alike were given the opportunity to choose from quality fabrics and designs to make their perfect outfit. Now that's what's called hitting the jackpot! Every client had a "personal" pattern created for themselves and many have joined Greg's Wardrobe Plan and receive a steady stream of beautiful new clothing once every three or four months.

Greg was also invited to host a casino VIP Event, called "A Tailored Affair," in October at the Atlantis Casino Resort • Spa in Reno, Nevada.

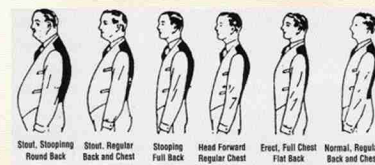


A Custom Tailored Greg Chapman Success Story

"Greg sends me a suit every three or four months on his "Wardrobe Plan" program. They fit perfectly. The convenience is wonderful. I manage money for wealthy clients. When I wear a Greg Chapman suit, I feel that I gain respect and confidence from business contacts. There is no substitute for Greg's individual pattern making approach to custom clothing. Every piece gives me a nice clean look of sophistication; a smooth drape cut to address my shape and posture, unlike other made-to-measure approaches to custom clothing."

—Shea Gordon, Principle Bernstein Investment Research & Management
gordonsz@bernstein.com

Few individuals fit the clothes,



so we make the clothes, to fit individuals.

Posture; and It's Effect on Fit

One can enhance their career dramatically by projecting an image of success. This "look" of success can only be achieved completely by wearing clothing that is made from your own pattern and conforms to your shape!

Mass-produced clothing is all made for an "average" posture and most people are not "average." The clothes literally look better on the hanger than on 90% of the people who purchase them.

Today, few people have ever experienced clothing that fits as it should, regardless of where or how they purchase. Consequently, they settle for clothes that may almost fit their "size" but not their "shape."

"My 38 year career in custom tailoring has been devoted to making each of my clients look their very best by creating clothes that fit "their" personal body shape perfectly without the need of fittings, alterations or shopping. My clients become accustomed to the unique "feel" as much as the "look" that comes with the superior fit of our clothing and more often than not, replace their entire wardrobes."

— Greg Chapman

One's posture, for example might be more "erect" than average, causing their arms to "rock" back which requires the sleeves to be set into the armhole with a forward rotation to avoid wrinkles down the back of the sleeves. The results of not fitting their shape are tugs, pulls and folds of fabric.

When people wear clothing that doesn't fit (or when they try doing business too casually,) they forfeit the opportunity to make their best "first impression." In the military, imagine a Private trying to make friends with a General. There you have it!

Specifically; erect posture, which causes short waistedness and arms to swing back; requiring rotation of the sleeves into the jacket accordingly.



Off-the-rack pants are often too long in the crotch, dragging across the thigh with each step.